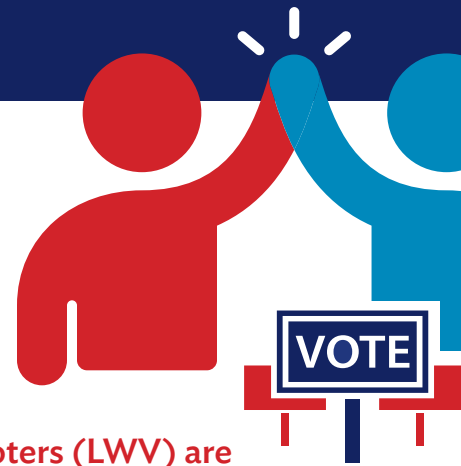


Election Collaboration Toolkit



The American Library Association (ALA) and the League of Women Voters (LWV) are partnering to engage, educate, and empower voters. We've created this toolkit to make it easier to connect voters to trusted, nonpartisan election information and to help local Leagues and libraries partner together (or partner even more!) to encourage and expand voter participation.

ABOUT OUR ORGANIZATIONS

American Library Association | ala.org

(ALA) is the only non-partisan, nonprofit organization dedicated entirely to America's libraries and library professionals. For almost 150 years, ALA has provided resources to inspire library and information professionals to transform their communities through essential programs and services. The ALA serves academic, public, school, government, and special libraries, advocating for the profession and the library's role in enhancing learning and ensuring access to information for all.

For generations, America's library professionals have supported civic participation in communities across the country. Find more information at: ala.org/advocacy/reader-voter-ready.

League of Women Voters | lww.org

LWV is a nonpartisan organization that has fought since 1920 to empower voters and defend democracy. It conducts voter registration, education, mobilization, and protection activity at the national, state, and local level through 750+ Leagues in all 50 states and the District of Columbia and US Virgin Islands. With more than a million members and supporters, the League is one of the most trusted nonpartisan voices in the elections landscape with deep grassroots in every corner of America.

HOW TO PARTNER

Local League of Women Voters groups and libraries across the country partner regularly. As civic infrastructure, libraries offer essential community programs and services. The League has promoted participation in democracy since its founding more than 100 years ago. Both are trusted sources of information for their community! In addition to public libraries, academic and school libraries offer opportunities for collaboration as well.

Looking for ways to collaborate beyond election season? See ALA/LWV's Guide to Civic Collaboration: bit.ly/ALA-LWV-c

1 Get in Touch

Contact your local League or local library to talk about your community's needs this election season, what each of your organizations is doing to meet those needs and identify areas where you can work together for greater impact. **Find your local League** at bit.ly/LWV-find or reach out to your local public, academic, or school library.



2 Share Important Election Information via VOTE411.org/ALA

Promoting **VOTE411** is a fantastic way that libraries and Leagues can partner during election season, and libraries have a unique URL with Reader Voter Ready branding!

Launched by the League of Women Voters Education Fund in 2006, VOTE411.org is voters' one-stop shop for nationwide election-related information, and millions of voters have used **VOTE411** to prepare for elections. With its voter registration tools and personalized ballot information,

VOTE411 is one of the most visited nationwide election information sites, and one of the few providing information in both English and Spanish.

LWV also produces nonpartisan voter guides on **VOTE411** designed to help voters understand where

candidates stand on the issues they care about. To make the voter guides, LWV asks candidates questions, and candidates answer in their own words, facilitating a fully nonpartisan process to help voters research what will be on their ballots. **VOTE411** is a resource libraries and local Leagues can share to help voters navigate the election.

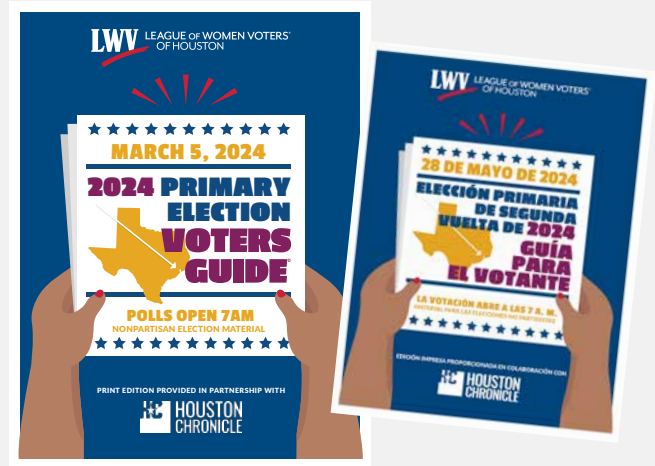
Here are three ways libraries can connect their community with **VOTE411**:

► Add **VOTE411** to your digital or online system.

Your library can recommend VOTE411.org/ALA in your online list of resources, link to it on your website, or set it as the background of your public computers in the weeks leading up to primary and general election days.

► Pass out **VOTE411** printed materials.

You can find co-branded **VOTE411** bookmarks, posters, and palm cards at the end of this guide to easily print and share in your library.



The Houston League and the Harris County Public Library created an e-Book and audiobook of the local LWV voter guide in both English and Spanish and made it available via the Libby app.

► bit.ly/HCPCL-guides

► Share **VOTE411** with staff.

Make sure staff at your library know about **VOTE411**, especially the reference staff receiving questions about upcoming elections.

Working together, libraries and local Leagues can amplify their impact and help communities find accurate and trustworthy election information they need to vote with confidence!

ALA and LWV have created a unique URL for libraries promoting VOTE411.org.

VOTE411.org/ALA

Please use VOTE411.org/ALA for library-hosted and library-related **VOTE411** content—this will help us measure library impact!



3 Co-Host Events

Local Leagues and libraries are already partnering on a range of activities, including voter registration drives, candidate forums, civic education events, letter writing events, and more. Here are a few ideas to get you started on in-person events and activities.

▶ Voter Registration Drives

Public, school, and academic libraries, like Ralph Brown Draughon Library at Auburn University, co-host voter registration and education events. (bit.ly/LVW-Draughon)



▶ Candidate Forums

The Oakland Area League held a Rochester Hills Public Library Board candidate forum at the library. (bit.ly/LWVOAL)

▶ Civic Education Events

The Amarillo League in Texas partnered with the Amarillo Public Library to host a series of Civics 101 classes for the public. (bit.ly/civics-101)



▶ Mis and Disinformation Training

The Marquette County League in Michigan partnered with the Peter White Public Library for a conversation on how to vet media sources and identify misinformation. (bit.ly/PWPLS-series)

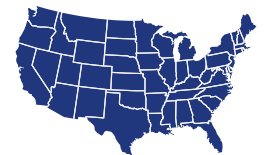


As founding partners in the Greater Cincinnati Voters Collaborative, the Cincinnati Public Library and League of Women Voters of the Cincinnati Area worked with other organizations to increase voter participation and engage, register and educate eligible voters in communities with traditionally low voter turnout.

▶ bit.ly/CHPL-partners

Note: specific voting laws and regulations vary state-to-state.

This toolkit provides general guidance at the national level, but librarians and League members should consult local resources to ensure programming is compliant. A good place to start is: afj.org/bolder-advocacy/practical-guidance-nonprofit-voter-assistance-series.



The Detroit Public Library and League of Women Voters of Detroit co-host a voter education series on a variety of topics including several with LWV's Democracy Truth Project on mis- and dis-information. Programs have included "Detecting Disinformation and 'Pink Slime' Sites" and "Combating Election Disinformation."

▶ bit.ly/detroit-series



CIVIC HOLIDAYS

Libraries and Leagues are on the ground sharing election dates and deadlines with their communities. While sharing election information and voter education resources is important year-round, there are specific national civic holidays we recommend organizing around if you're looking for a place to start.



AUG National Poll Worker Recruitment Day

Usually held during the first two weeks of August, this is a day of action to encourage people to sign up to become poll workers. Power the Polls offers an online portal, powered by the nonpartisan nonprofit Fair Elections Center, where people can sign up to receive local poll worker information. LWV is a national partner of Power the Polls! Be sure to use their link when signing up poll workers: powerthepolls.org/LWV.

SEPT National Voter Registration Day

Hosted annually on the third Tuesday of September, this is the largest single-day voter registration drive each year, and the perfect day to share **VOTE411's** online voter registration and information tool (VOTE411.org/register) or co-host an in-person drive. More resources can be found at: NationalVoterRegistrationDay.org.

OCT National Voter Education Week

With a focus on providing voters with the resources they need to vote with confidence, this is a great week to share [VOTE411.org's](https://VOTE411.org/make-a-voting-plan) make a voting plan page: VOTE411.org/make-your-plan. More information and resources can be found at VoterEducationWeek.org.

OCT Vote Early Day

Partners nationwide, including ALA and LWV, empower voters with information to cast their ballot early. Voters can easily check their state's early voting rules at VOTE411.org/voting-rules. More information and resources can be found on Vote Early Day's website: voteearlyday.org.

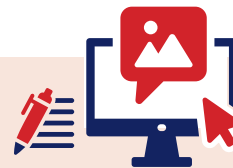
ELECTIONS ARE YEAR-ROUND

A great time to share VOTE411.org with your community is when an election is coming up. Across the country, local elections happen year-round for offices like mayor, city council, county commission, and even for library board in some districts.

These local elections can have such an impact on residents' daily life, yet they can be hard for voters to keep track of. Libraries are essential spaces to promote these local elections and ensure voters are prepared to cast their ballot by registering to vote or having their voter ID ready, if applicable.

In some districts, libraries can also work with local election officials to open their doors as polling places or ballot drop-off locations. Reach out to your local election official to learn more if of interest.

COMMUNICATIONS TOOLKIT ▶ bit.ly/ALA-LWV-toolkit



Together, local Leagues and libraries can promote specific events as well as the availability of high-quality election information. This ALA-LWV toolkit contains bookmarks, flyers, and palm cards for you to print and share, a social media toolkit, and a press release template to promote your collaborative election activities. Please also share your work with ALA and LWV by tagging us on social media and using the hashtags **#ReaderVoterReady** and **#VOTE411**.